

HT Series



UL Recognized
CSA Certified
VDE Approved



HT Series

The HT series power line filters provide superior common-mode and premium differential-mode attenuation to RFI noise on the frequency range from 10kHz to 30MHz, for IEC 60601 and UL2601 patient-connected equipment, as well as all other electronic equipment that cannot tolerate leakage current.

They are a size- and cost-effective solution to the problem of meeting both medical leakage current limits and conducted emissions limits in equipment with high noise sources (such as switching power supplies). HT series filters can meet the following Conducted Emissions standards:

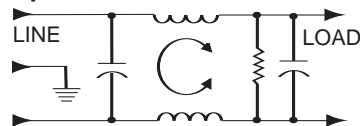
- European Normalized Standards based on EN55022, Level A (in many cases, Level B also).
- FCC Part 15, Computing Devices, Class B.
- FCC Part 18, ISM Equipment, Industrial and Consumer.

Note: When using the models with an IEC connector, remember that the leakage current of the companion line cord, GA400, is more significant than that of the filter - which may disqualify this line cord from use in patient care applications.

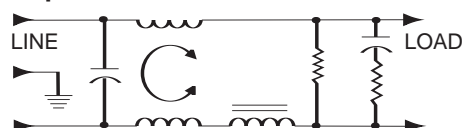
For more information on UL2601, see Appendix C.

Electrical Schematics

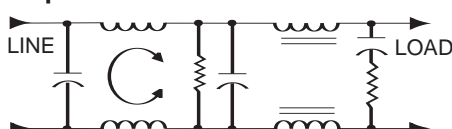
6 Amp



10 Amp



15 Amp



Specifications

Maximum leakage current, each line-to-ground	
@ 120 VAC 60 Hz:	2µA
@ 250 VAC 50 Hz:	5µA
Hipot rating (one minute):	
line-to-ground	1500 VAC
line-to-line	1450 VDC
Operating frequency:	50/60 Hz
Rated voltage (max.):	250 VAC
Minimum insertion loss in dB:	
Line-to-ground in 50 ohm circuit	

Current Rating	Frequency-MHz											
	.01	.02	.05	.08	.15	.5	1	2	5	10	20	30
6A	16	23	32	41	46	41	33	26	15	9	6	2
10A	9	15	24	30	36	42	34	22	11	12	8	8
15A	4	9	18	22	27	41	34	22	12	12	5	2

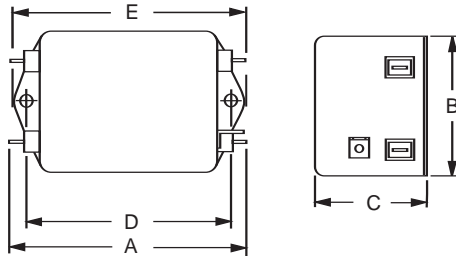
Line-to-line in 50 ohm circuit

Current Rating	Frequency-MHz											
	.01	.02	.05	.08	.15	.5	1	2	5	10	20	30
6A	4	1	14	45	51	70	70	65	55	47	37	37
10A	7	8	17	32	52	70	70	70	65	55	40	35
15A	12	16	15	10	51	70	70	70	70	70	65	55

HT Series

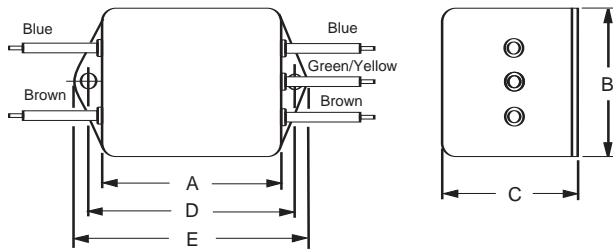
Case Styles

HT1 (6 and 10 Amp)



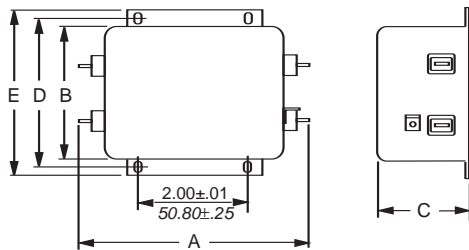
Typical dimensions:
 Terminals: .250 [6.35] (5) Holes: .07 [1.8] Dia.(4) Slot: .07 x .16 [1.8 x 4.1]
 Mounting holes: .188 [4.78] Dia. (2)

HT3

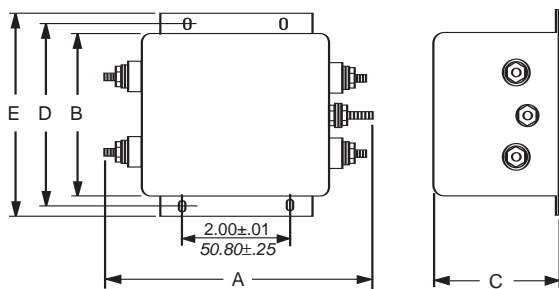


Typical dimensions:
 Wire leads: 4.0 [101.6] Min. Mounting holes: .188 [4.78] Dia. (2)

HT1 (15 Amp)

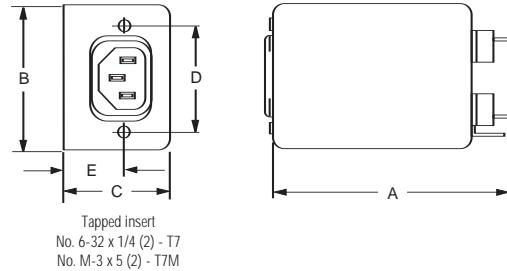


HT6

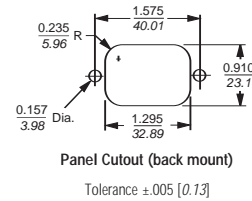


Typical dimensions:
 Terminals: No. 8-32 (5) Mounting holes: .203 x .156 [5.16 x 3.96] Dia. (4)
 Torque: 18±2 in.lb

HT7 & HT7M (with metric insert)



Recommended Panel Cutout



Case Dimensions

Part No.	A (max)	B (max)	C (max)	D $\frac{+.015}{-.38}$	E (max)
6EHT1	3.56 90.4	2.15 54.6	1.81 46.0	2.938 74.63	3.38 85.9
6EHT3	2.55 64.8	2.15 54.6	1.81 46.0	2.938 74.63	3.38 85.9
6EHT7, 6EHT7M	3.52 89.4	2.25 57.2	1.78 45.2	1.575 40.01	0.63 16.0 †
10EHT1	4.69 119.1	2.27 57.7	1.8 45.7	4.063 103.2	4.47 113.5
10EHT3	3.69 93.7	2.27 57.7	1.8 45.7	4.063 103.2	4.47 113.5
15EHT1	5.45 138.4	3.12 79.2	2.18 55.4	3.5 88.9	3.96 100.6
15EHT6	5.95 151.1	3.12 79.2	2.18 55.4	3.5 88.9	3.96 100.6

† ±.02 [±.5]

Part Numbers

6EHT1	10EHT1
6EHT3	10EHT3
6EHT7	15EHT1
6EHT7M	15EHT6

Line Cord No. GA400
 7 1/2 foot, 3-conductor line cord to mate with T7 models